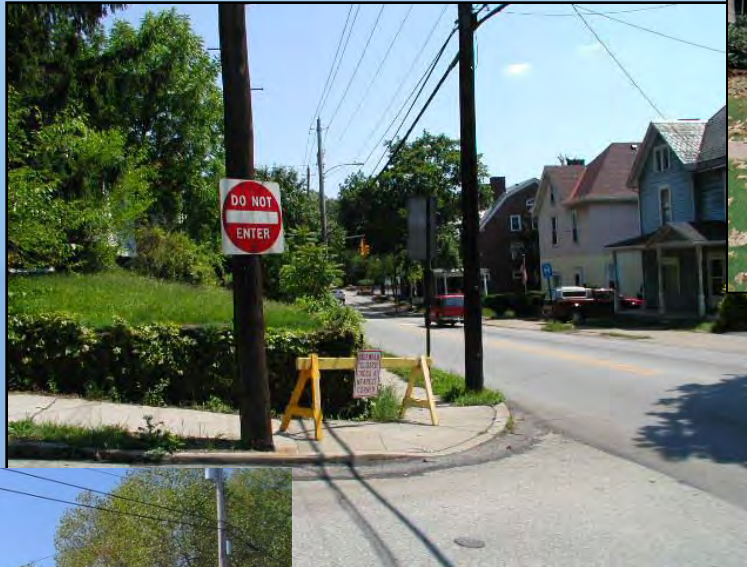


## PRINCIPLES OF SMART GROWTH

### 4 Create walkable neighborhoods





A PROGRAM OF PENN STATE COOPERATIVE EXTENSION

5 Foster distinctive, attractive communities with a strong sense of place



# PRINCIPLES OF SMART GROWTH



[www.preservationnation.org](http://www.preservationnation.org)

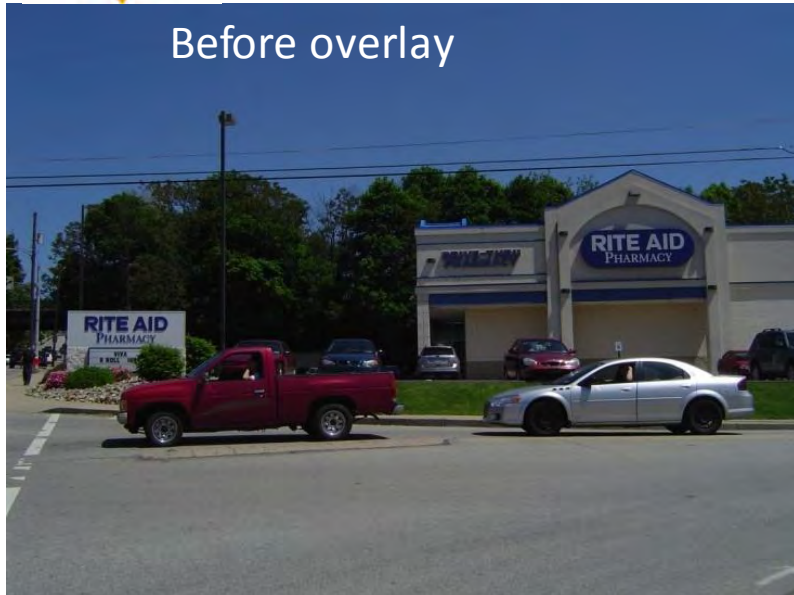
[www.preservationnation.org/main-street/about-main-street/](http://www.preservationnation.org/main-street/about-main-street/)



[www.pps.org/](http://www.pps.org/)

Before overlay

After overlay



**Gateway Overlay District Enhancements**



PENNSTATE  
A PROGRAM OF PENN STATE COOPERATIVE EXTENSION

# PRINCIPLES OF SMART GROWTH

## 6 Preserve open space, farmland, natural beauty, and critical environmental areas

**New Horizons**  
A County-Wide Greenways and Blueways Network  
Westmoreland County, Pennsylvania

*a companion document to  
the County's comprehensive land use, parks,  
recreation and open space planning efforts*

[www.co.westmoreland.pa.us/westmoreland/lib/westmoreland/idc/pdf/Adopted\\_New\\_Horizons\\_Plan.pdf](http://www.co.westmoreland.pa.us/westmoreland/lib/westmoreland/idc/pdf/Adopted_New_Horizons_Plan.pdf)



[www.naturalgas.extension.psu.edu](http://www.naturalgas.extension.psu.edu)



# PRINCIPLES OF SMART GROWTH

7 Strengthen and direct development towards existing communities



[www.cnu.org/leednd](http://www.cnu.org/leednd)



# PRINCIPLES OF SMART GROWTH

## 8 Provide a variety of transportation choices



[www.commuteinfo.org/](http://www.commuteinfo.org/)





PENNSTATE  
A PROGRAM OF PENN STATE COOPERATIVE EXTENSION

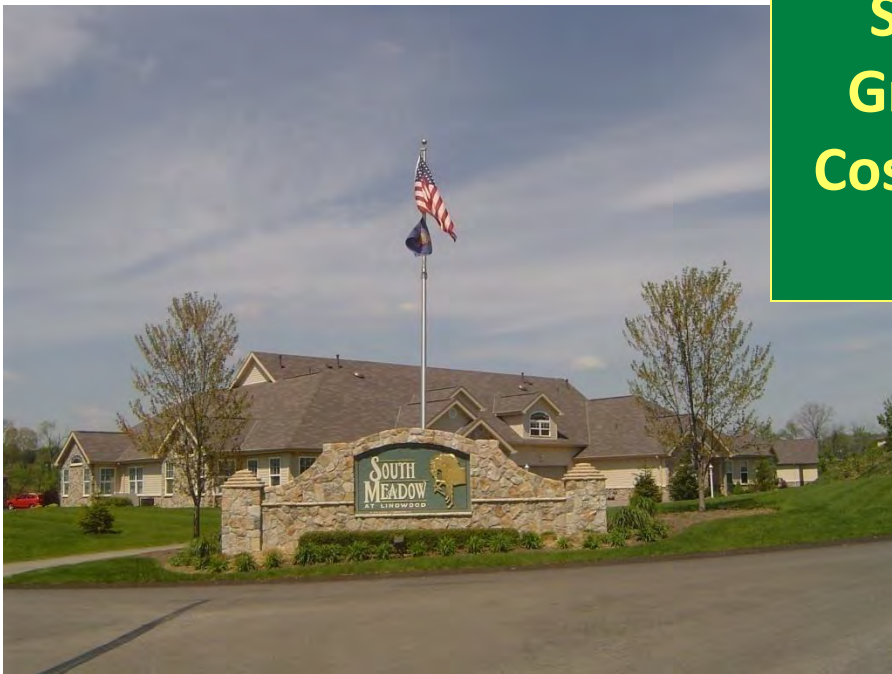
# PRINCIPLES OF SMART GROWTH

9 Make development decisions predictable, fair and cost effective

[www.co.westmoreland.pa.us/westmoreland/cwp/view.asp?a=1483&q=608884](http://www.co.westmoreland.pa.us/westmoreland/cwp/view.asp?a=1483&q=608884) (Comprehensive PLAN)



Smart Growth Costs Less



## PRINCIPLES OF SMART GROWTH

10 Encourage community and stakeholder collaboration in development decisions

<http://extension.psu.edu/community/ecd/courses/land-use-planning>



**Developing Effective Citizen Engagement:**

[www.smartgrowthpa.org/news\\_detail.asp?ID=865](http://www.smartgrowthpa.org/news_detail.asp?ID=865)

**Sustaining Public Engagement**

[www.smartgrowthpa.org/news\\_detail.asp?ID=866](http://www.smartgrowthpa.org/news_detail.asp?ID=866)






## My Community: What's the Plan?

Students understand how communities are planned.

<http://extension.psu.edu/ecd/land-use/my-community-whats-the-plan>

Economic Exchange Day 2009 Greater Latrobe High School	
Sponsored By	
Latrobe Area Chamber of Commerce	Latrobe Specialty Steel Company
	
Conducted By	
Smart Growth Partnership	
	

# PRINCIPLES OF SMART GROWTH

Encourage community and stakeholder collaboration in development decisions

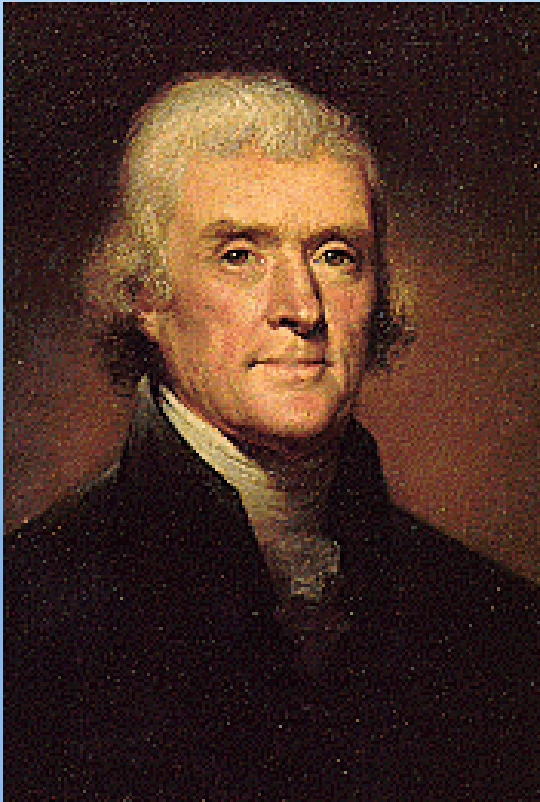


Alex Gonzalez of Smart Growth Partnership meets with students



Student leaders review aerial photos of Latrobe and Derry





## Public Involvement

“I know no safe depository of the ultimate powers of the society but the people themselves.

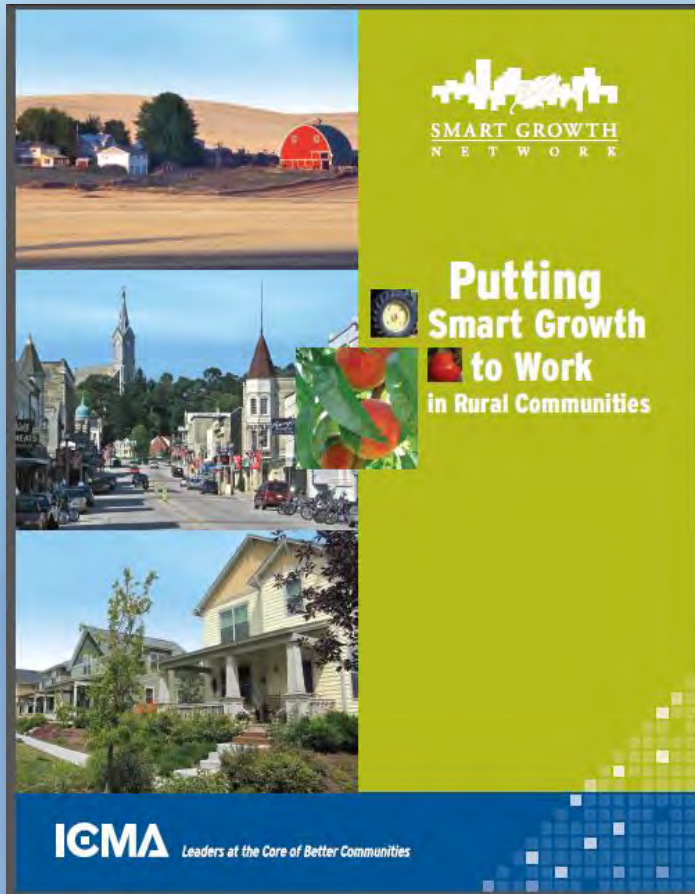
And if we think them not enlightened enough to exercise their control with a wholesome discretion, the remedy is not to take it from them, but to inform their discretion.”

*Thomas Jefferson - 18 September 1820*

<http://extension.psu.edu/ecd/land-use>

<http://extension.psu.edu/ecd/land-use/natural-resource-preservation-and-land-management>

Penn State Extension’s Land Use & Decision Making Education Team presents a series of webinars to help planners, elected officials, and concerned citizens come together to make better land use decisions.



## *How does this apply to me and my community?*

“Many rural communities are facing challenges, including rapid growth at metropolitan edges, declining rural populations, and loss of working lands. This report focuses on smart growth strategies that can help guide growth in rural areas while protecting natural and working lands and preserving the rural character of existing communities.

**These strategies are based around three central goals:**

- 1) support the rural landscape by creating an economic climate that enhances the viability of working lands and conserves natural lands;
- 2) help existing places to thrive by taking care of assets and investments such as downtowns, Main Streets, existing infrastructure, and places that the community values; and
- 3) create great new places by building vibrant, enduring neighborhoods and communities that people, especially young people, don't want to leave.”

[http://icma.org/en/icma/knowledge\\_network/documents/kn/Document/301483/Putting\\_Smart\\_Growth\\_to\\_Work\\_in\\_Rural\\_Communities](http://icma.org/en/icma/knowledge_network/documents/kn/Document/301483/Putting_Smart_Growth_to_Work_in_Rural_Communities)



Penn State **Extension**

## **Pennsylvania Agriculture: Local Land Use Planning, Regulations and Policies**

These regional workshops cover the availability and interrelationship of planning and policy tools.

<http://extension.psu.edu/community/ecd/courses/pennsylvania-agriculture-local-land-use-planning-regulations-and-policies>

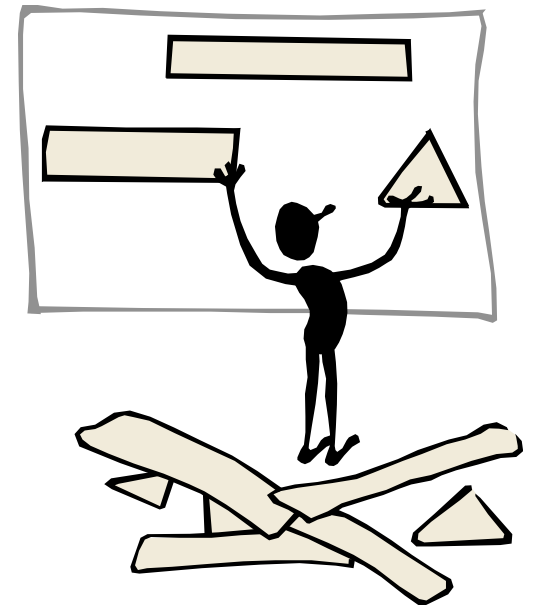
[www.smartgrowthpa.org](http://www.smartgrowthpa.org)





A PROGRAM OF PENN STATE COOPERATIVE EXTENSION

➤ **Route 30 Master Plan**  
[www.route30plan.com](http://www.route30plan.com)



+You Search Images Maps Play YouTube News Gmail Drive Calendar More ▾

Google Latrobe, PA

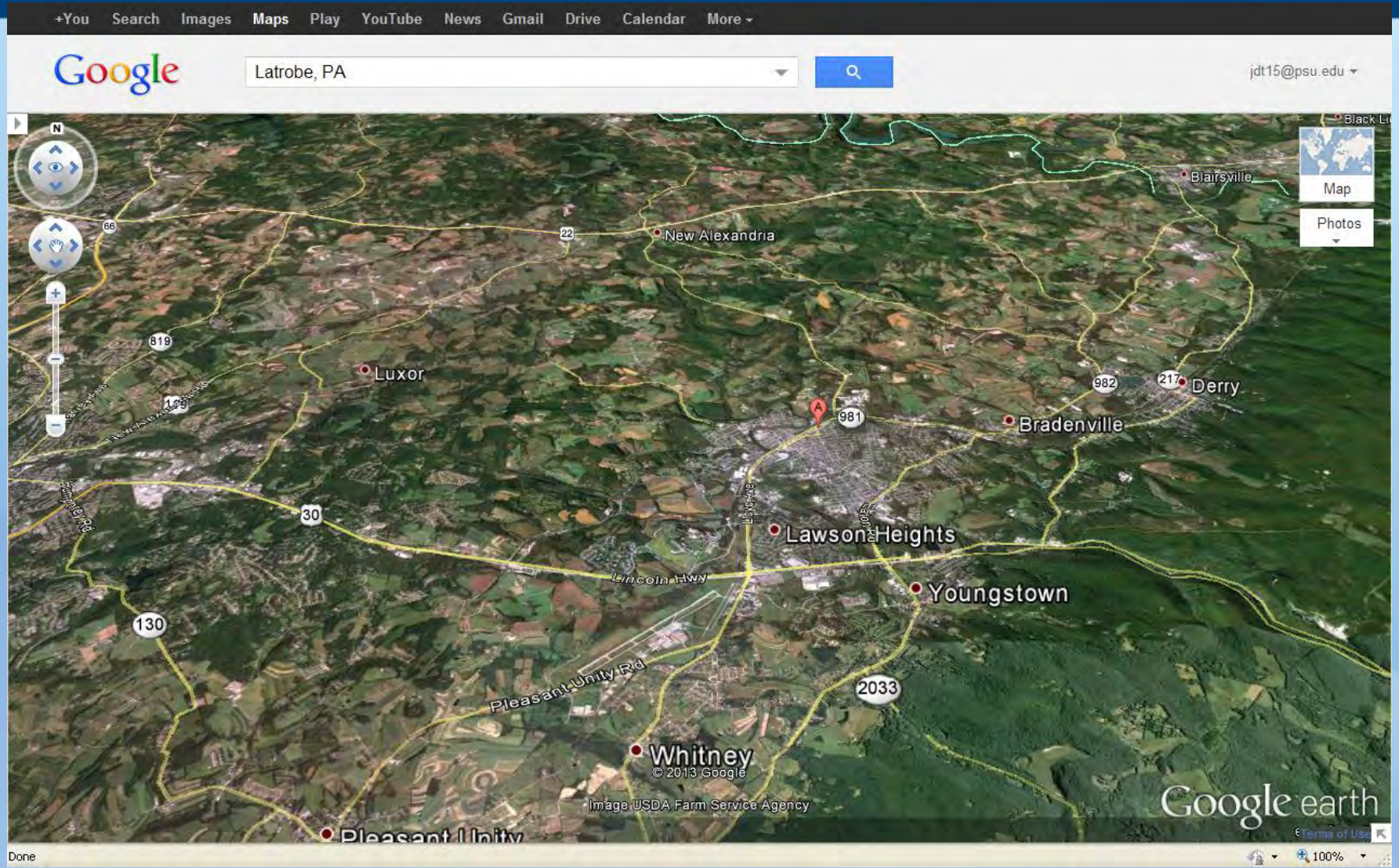
jdt15@psu.edu ▾

Map data ©2013 Google - [Edit in Google Map Maker](#) [Report a problem](#)

Done Internet 100%



# Penn State Extension



# Penn State **Extension**



# DEMONSTRATION PLAN



## LEGEND

retail primary

mixed use

high-density housing

mid-density housing

low-density housing

office / employment use



# Route 30 Master Plan

[www.route30plan.com](http://www.route30plan.com)



US ROUTE 30



## MASTER PLAN



## AND IMPLEMENTATION TOOLKIT

prepared for:



Smart Growth Partnership  
of Westmoreland County

prepared by:



RENAISSANCE PLANNING GROUP

In association with  
Michael Baker, Jr. Inc, Olszak Management  
and Pashek Associates

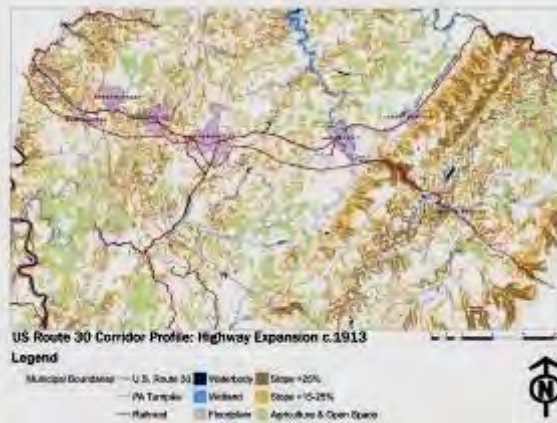
US Route 30 Master Plan

Optimal Corridor Conceptual Plan



- Legend
- 1A-Minor traffic signal improvements
  - 1B-Major traffic signal improvements
  - 1C-Modular traffic signal improvements
  - 1D-Modular traffic signal improvements
  - 1E-Modular traffic signal improvements
  - 1F-Modular traffic signal improvements
  - 1G-Modular traffic signal improvements
  - 1H-Modular traffic signal improvements
  - 1I-Modular traffic signal improvements
  - 1J-Modular traffic signal improvements
  - 1K-Modular traffic signal improvements
  - 1L-Modular traffic signal improvements
  - 1M-Modular traffic signal improvements
  - 1N-Modular traffic signal improvements
  - 1O-Modular traffic signal improvements
  - 1P-Modular traffic signal improvements
  - 1Q-Modular traffic signal improvements
  - 1R-Modular traffic signal improvements
  - 1S-Modular traffic signal improvements
  - 1T-Modular traffic signal improvements
  - 1U-Modular traffic signal improvements
  - 1V-Modular traffic signal improvements
  - 1W-Modular traffic signal improvements
  - 1X-Modular traffic signal improvements
  - 1Y-Modular traffic signal improvements
  - 1Z-Modular traffic signal improvements

March 13, 2007



### US ROUTE 30 DEMONSTRATION PLAN

Unity Township, Pennsylvania

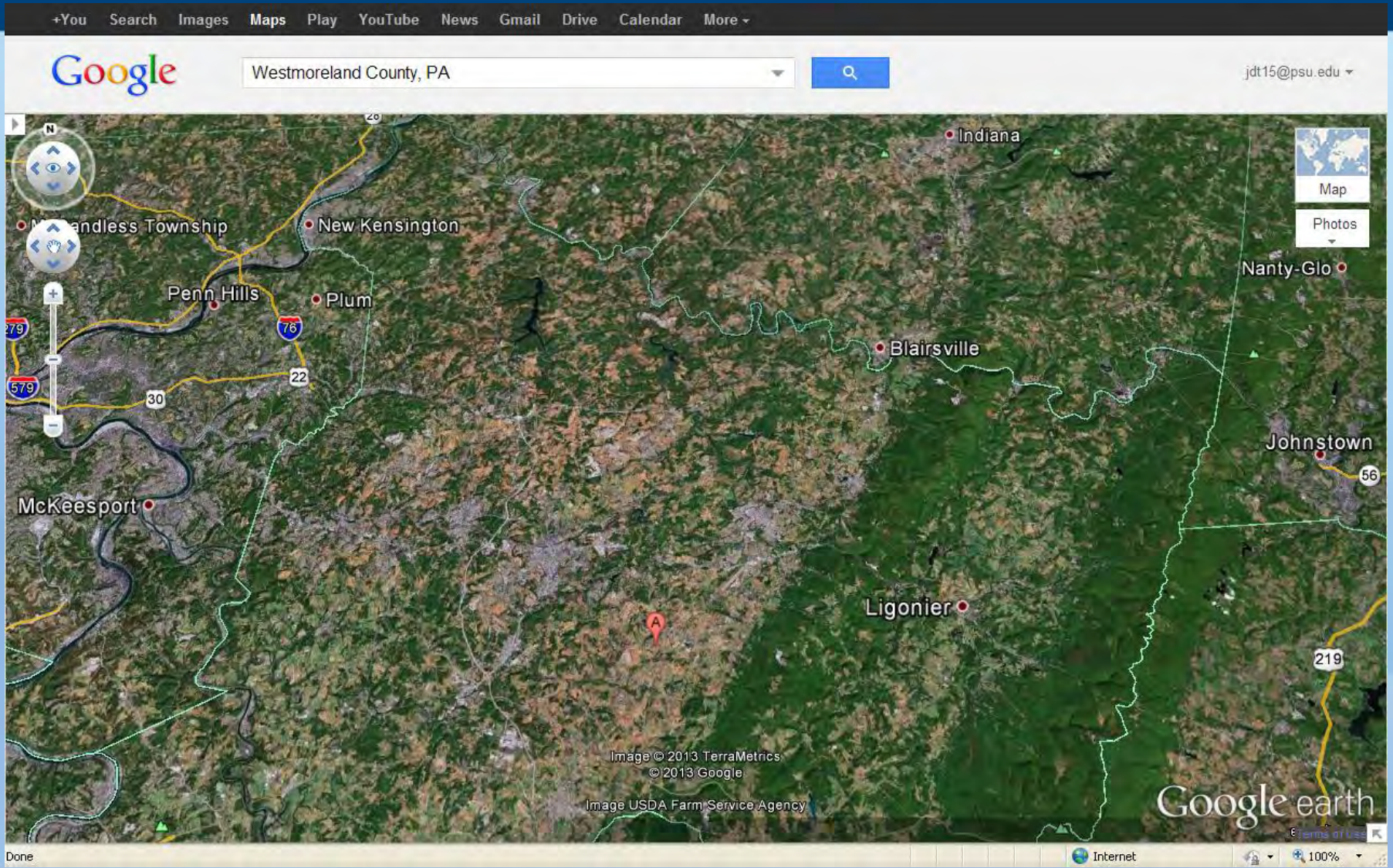
"The model process utilized to create the model land development for Route 30"

February 2008

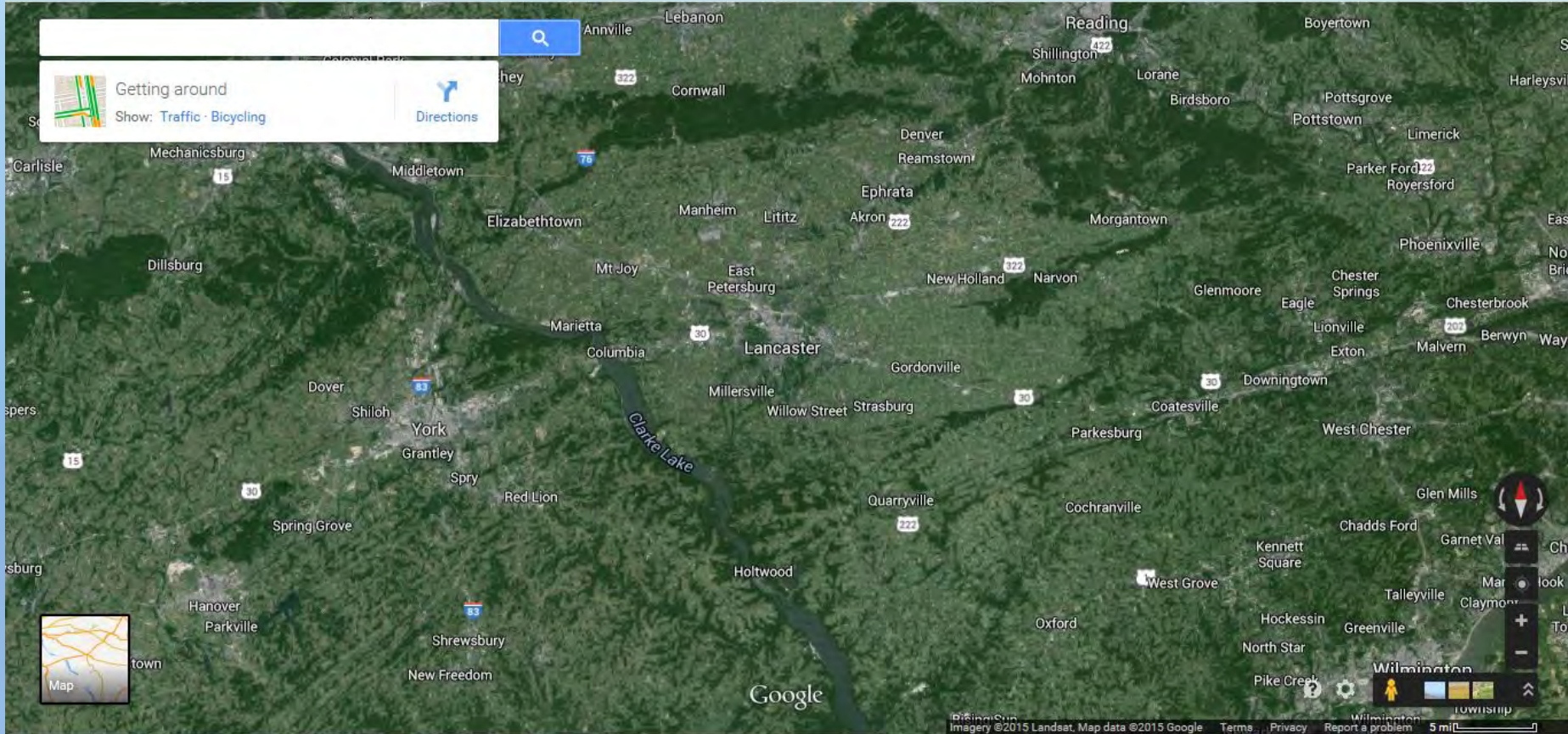
prepared for: SMART GROWTH PARTNERSHIP OF WESTMORELAND COUNTY

prepared by: RENAISSANCE PLANNING GROUP

In association with Michael Baker, Jr. Inc, Pashek Associates, and Olszak Management

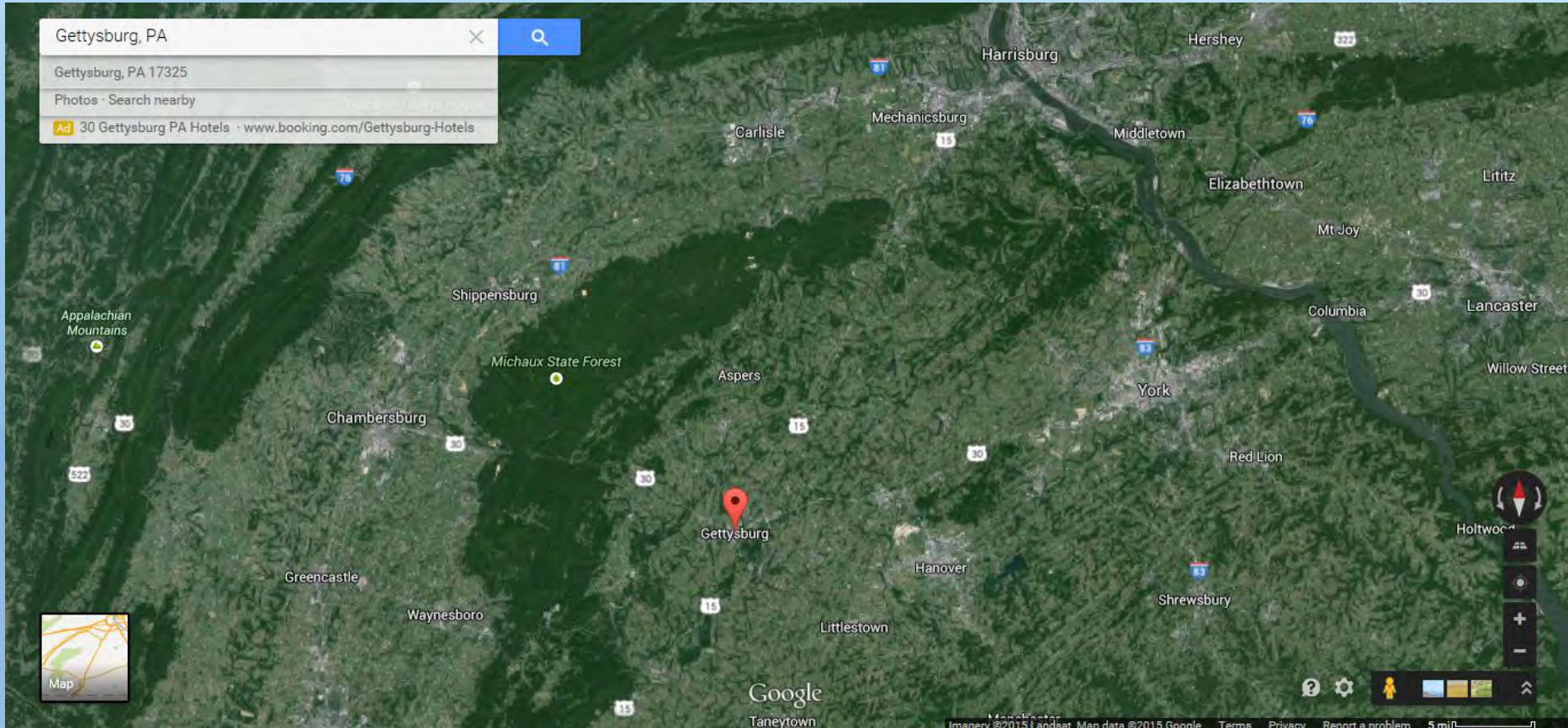


# Lancaster



# Penn State Extension

# Gettysburg



Penn State **Extension**

# THANK YOU!

<http://www.smartgrowthpa.org>

