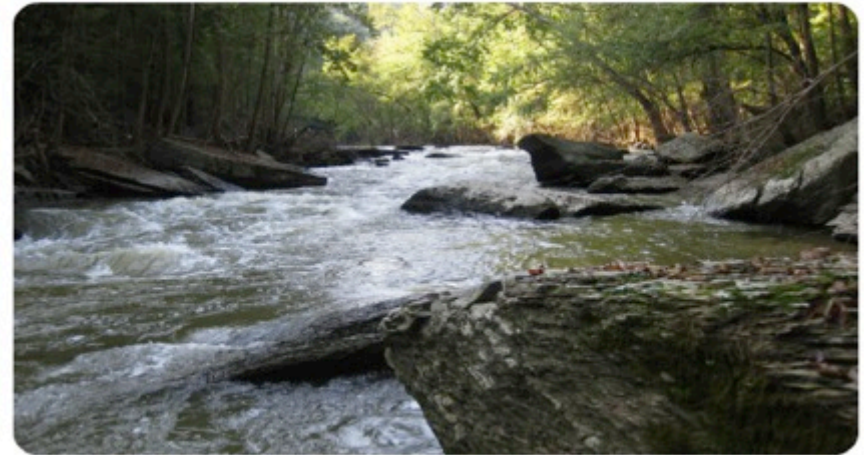
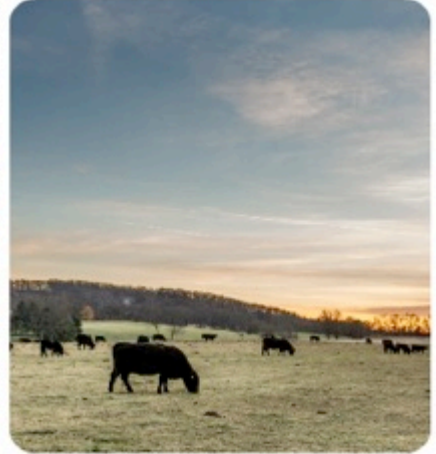


GETTING IN THE DOOR: INITIATING STRONG LANDOWNER RELATIONSHIPS & CLOSING THE DEAL

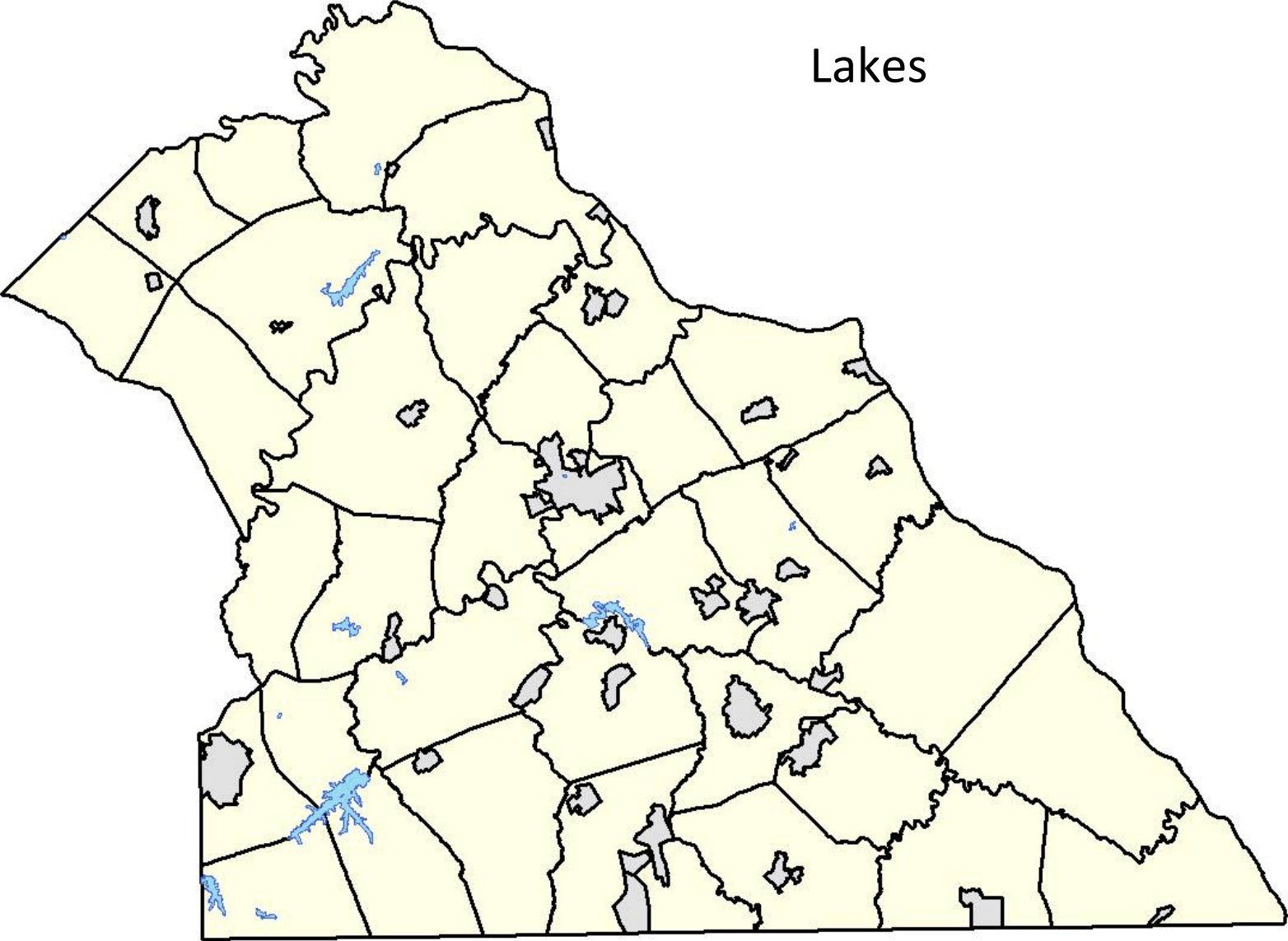
- Bud Cook: Northeast PA Program Director
The Nature Conservancy Northeastern Pennsylvania
- John Goodall: Western Area Manager
Brandywine Conservancy
- Sean Kenny: Executive Director
Farm & Natural Lands Trust of York County
- Charlie Schwarz: Land Protection Specialist
Northcentral Pennsylvania Conservancy



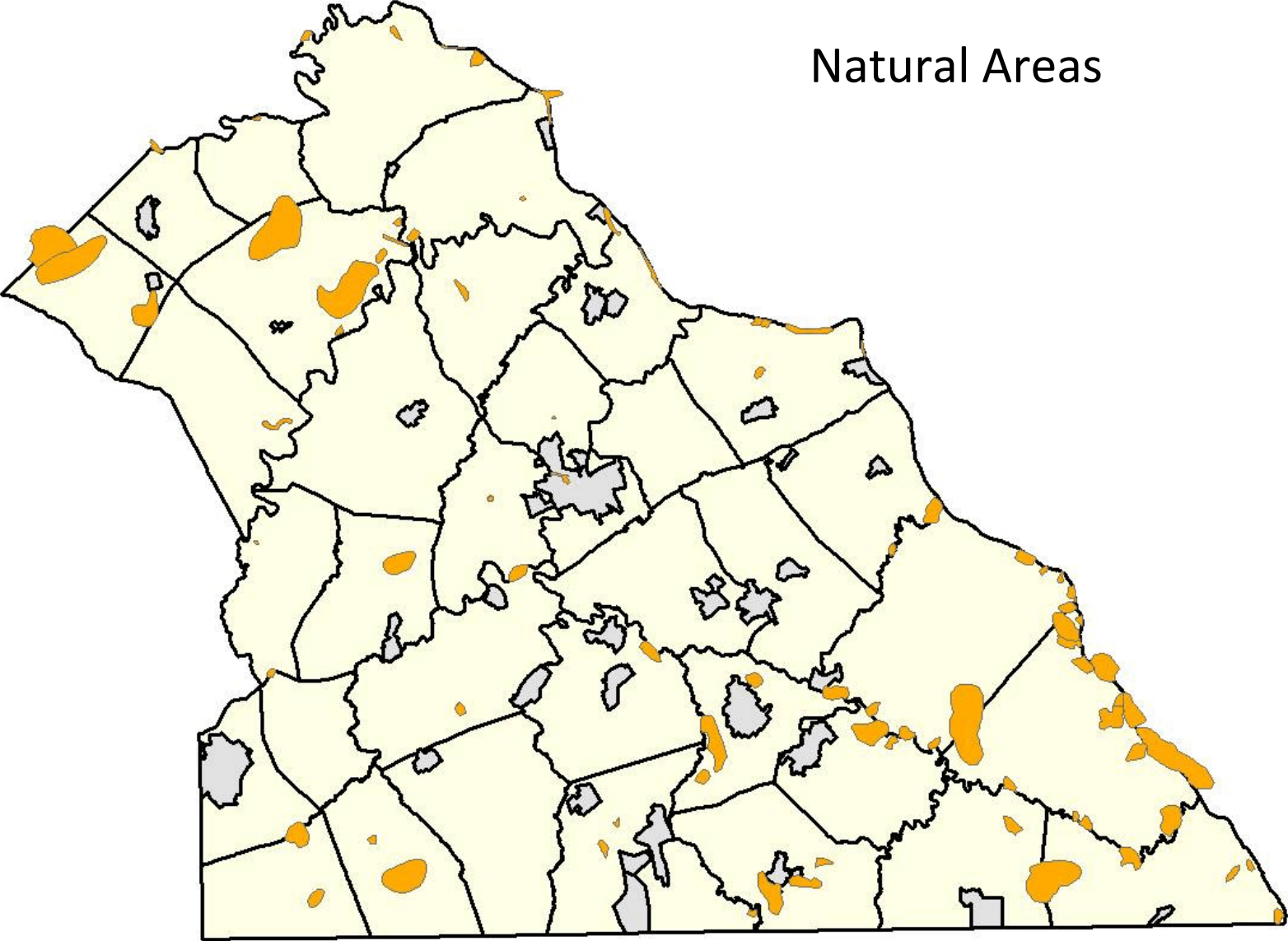
FARM & NATURAL LANDS TRUST *of York County*



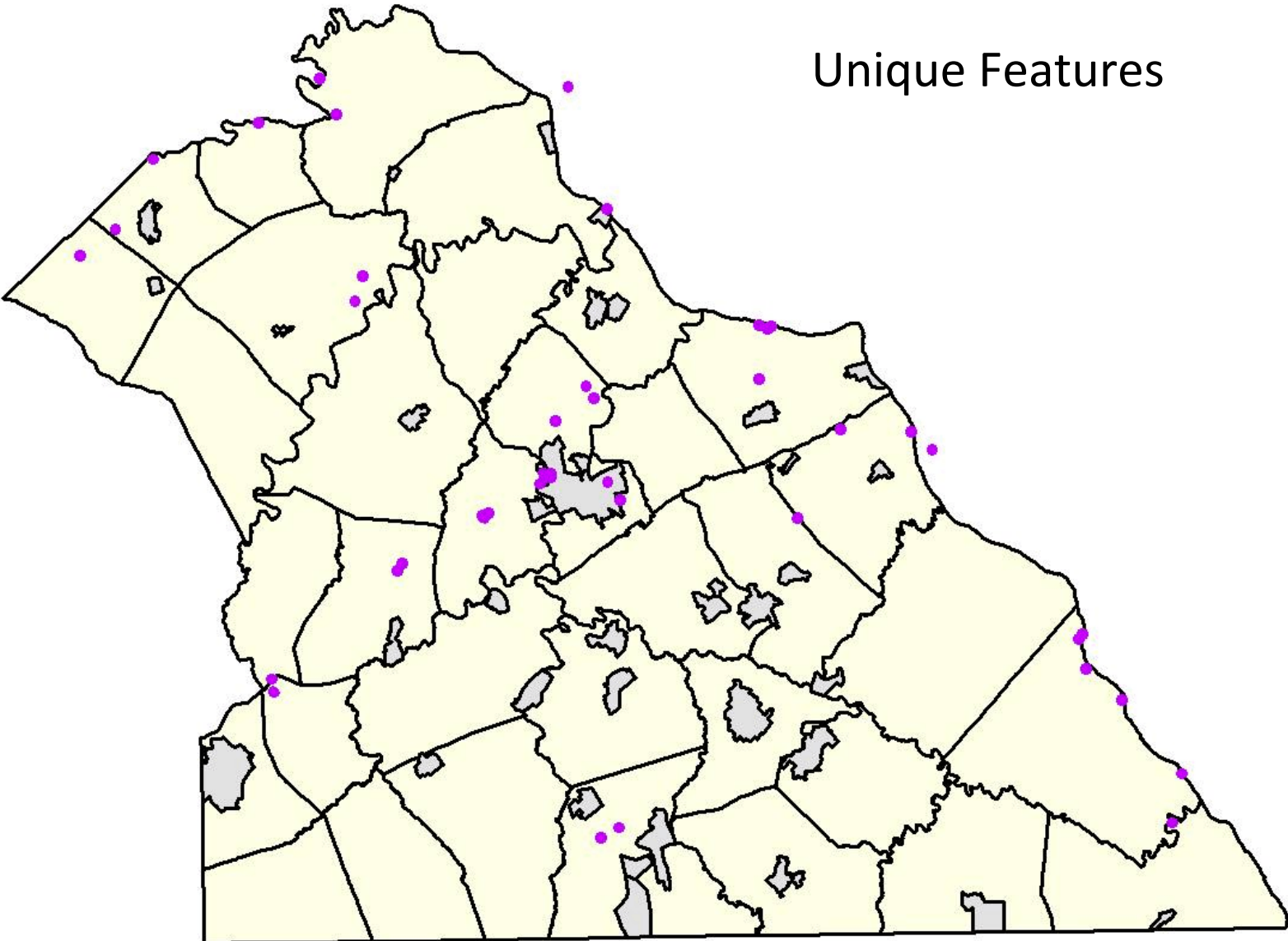
Lakes



Natural Areas



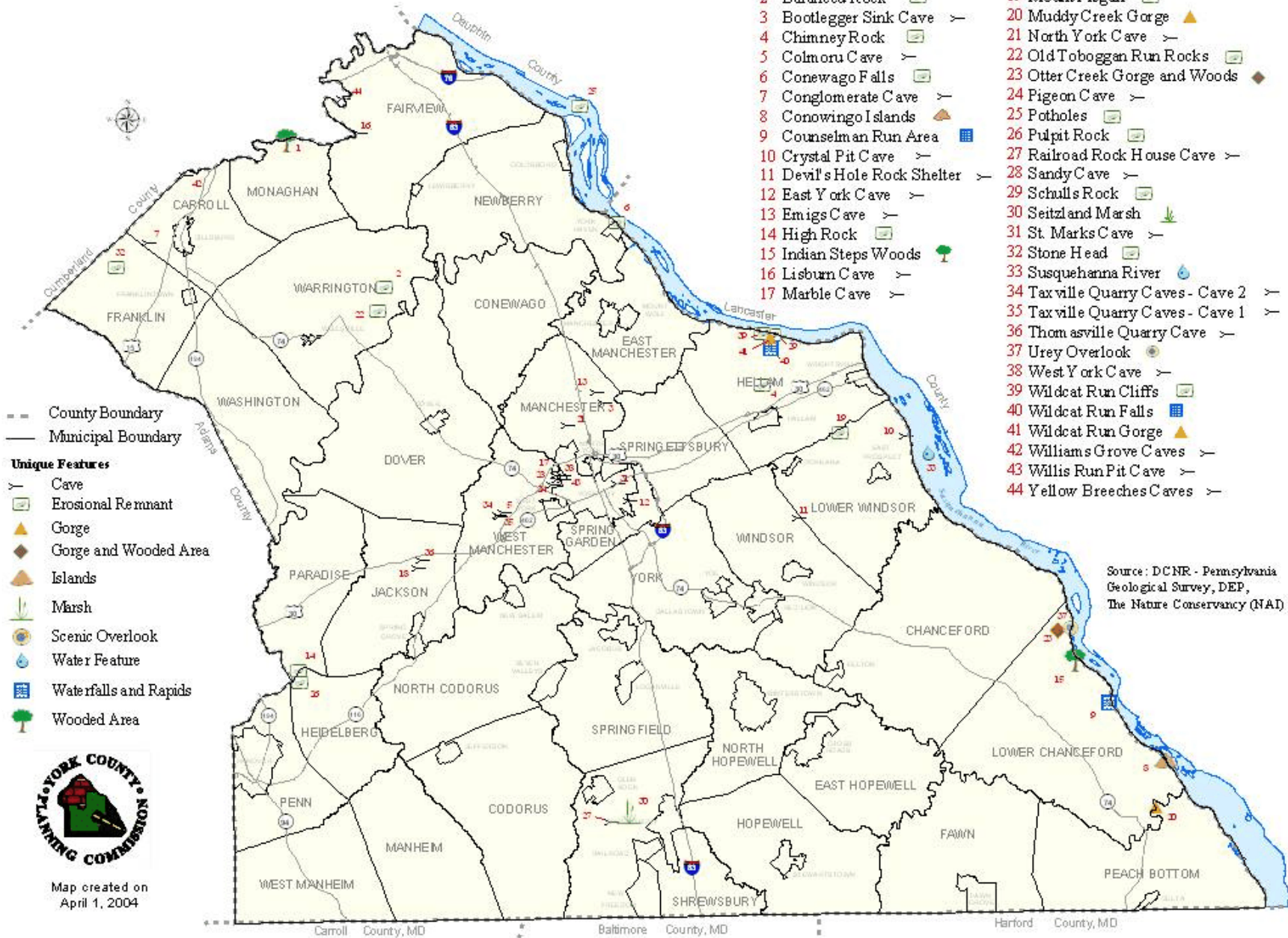
Unique Features



Map 19 Unique Features in York County, Pennsylvania

Unique Features List

- | | |
|------------------------------|-----------------------------------|
| 1 Andersontown Woods | 18 Midnight Cave |
| 2 Balanced Rock | 19 Mount Pisgah |
| 3 Bootlegger Sink Cave | 20 Muddy Creek Gorge |
| 4 Chimney Rock | 21 North York Cave |
| 5 Colmoru Cave | 22 Old Toboggan Run Rocks |
| 6 Conewago Falls | 23 Otter Creek Gorge and Woods |
| 7 Conglomerate Cave | 24 Pigeon Cave |
| 8 Conowingo Islands | 25 Potholes |
| 9 Counselman Run Area | 26 Pulpit Rock |
| 10 Crystal Pit Cave | 27 Railroad Rock House Cave |
| 11 Devil's Hole Rock Shelter | 28 Sandy Cave |
| 12 East York Cave | 29 Schulls Rock |
| 13 Emigs Cave | 30 Seitzland Marsh |
| 14 High Rock | 31 St. Marks Cave |
| 15 Indian Steps Woods | 32 Stone Head |
| 16 Lisburn Cave | 33 Susquehanna River |
| 17 Marble Cave | 34 Taxville Quarry Caves - Cave 2 |
| | 35 Taxville Quarry Caves - Cave 1 |
| | 36 Thomasville Quarry Cave |
| | 37 Urey Overlook |
| | 38 West York Cave |
| | 39 Wildcat Run Cliffs |
| | 40 Wildcat Run Falls |
| | 41 Wildcat Run Gorge |
| | 42 Williams Grove Caves |
| | 43 Willis Run Pit Cave |
| | 44 Yellow Breaches Caves |

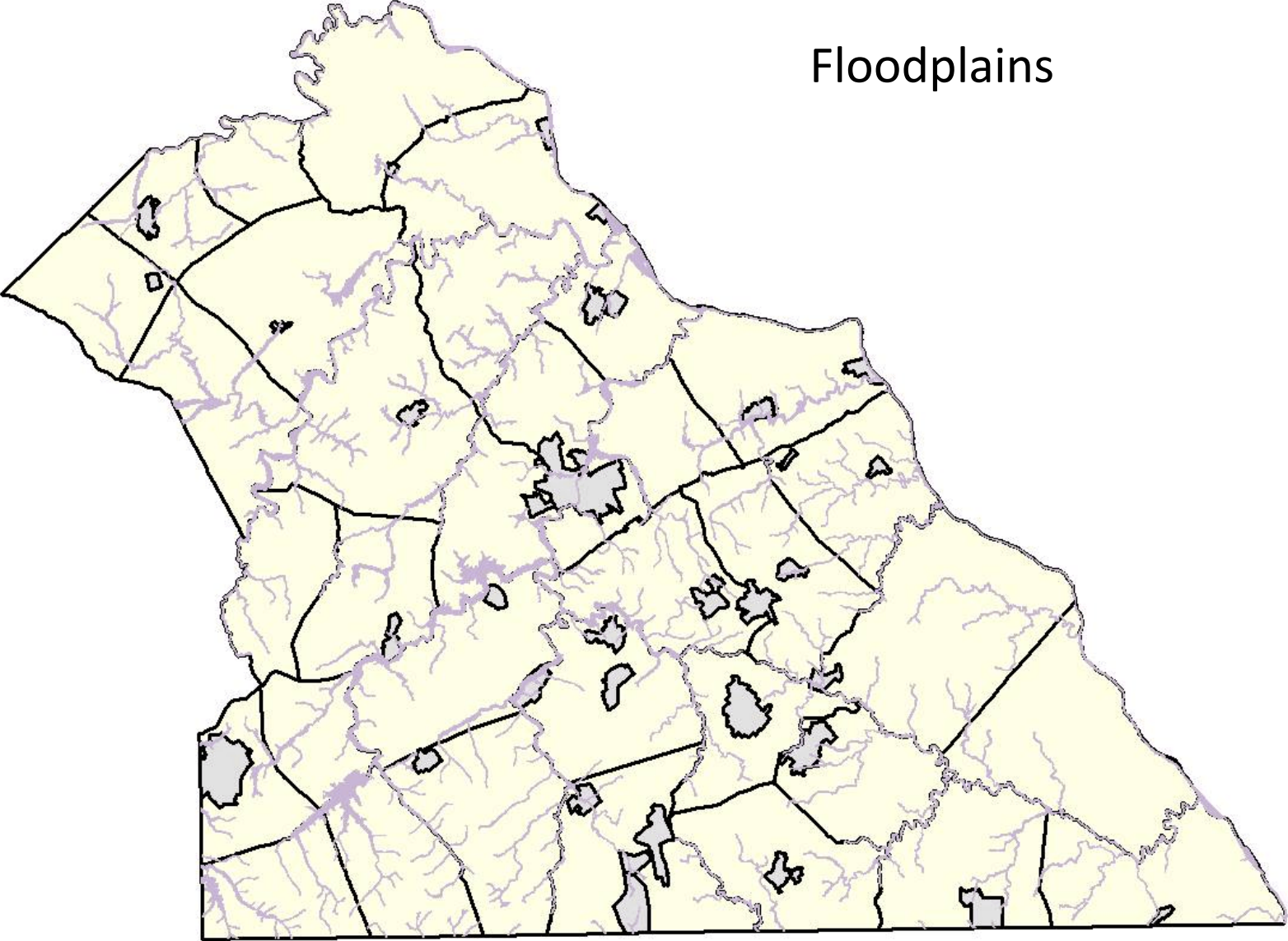


Source: DCNR - Pennsylvania Geological Survey, DEP, The Nature Conservancy (NAD)

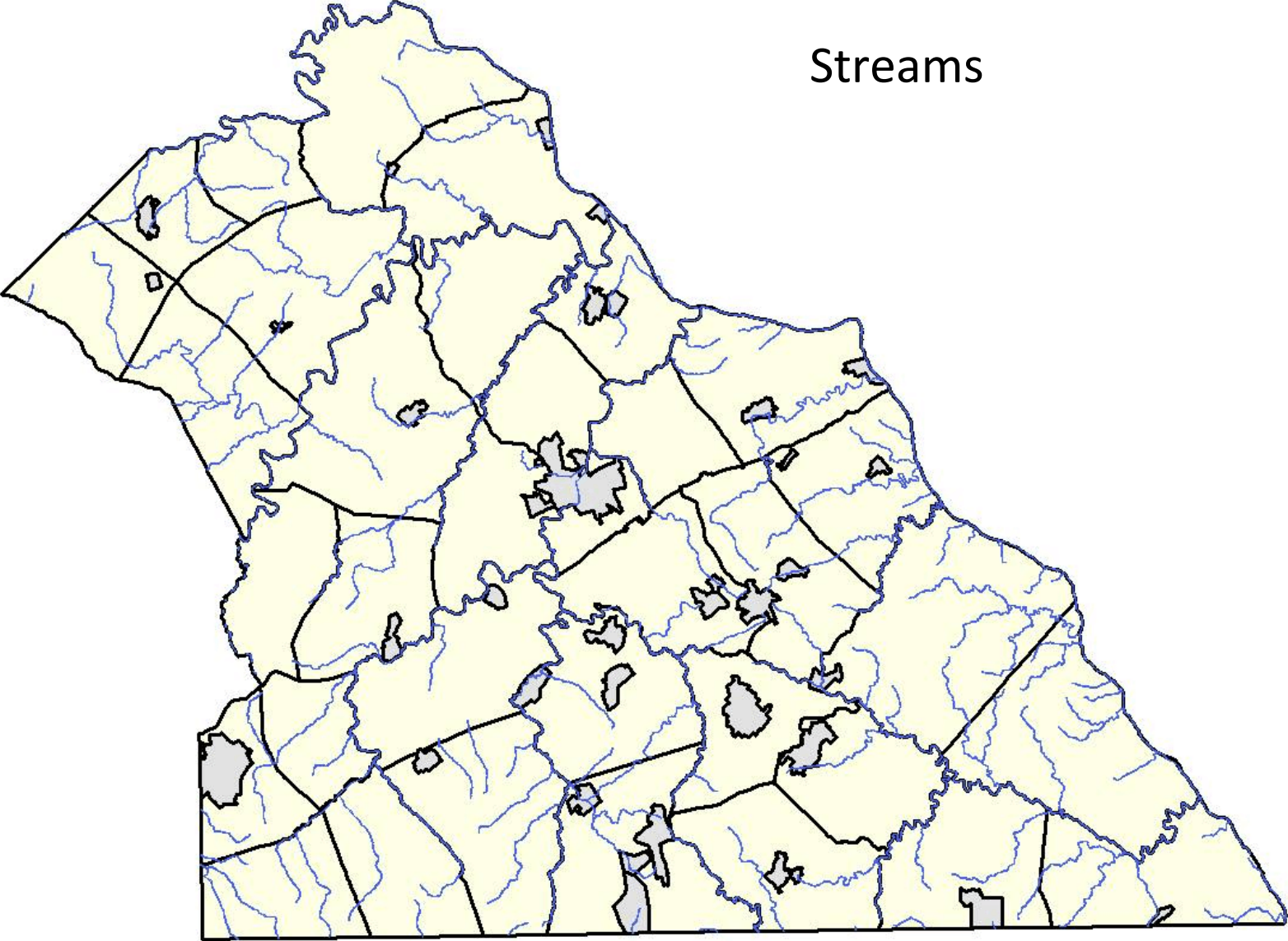


Map created on April 1, 2004

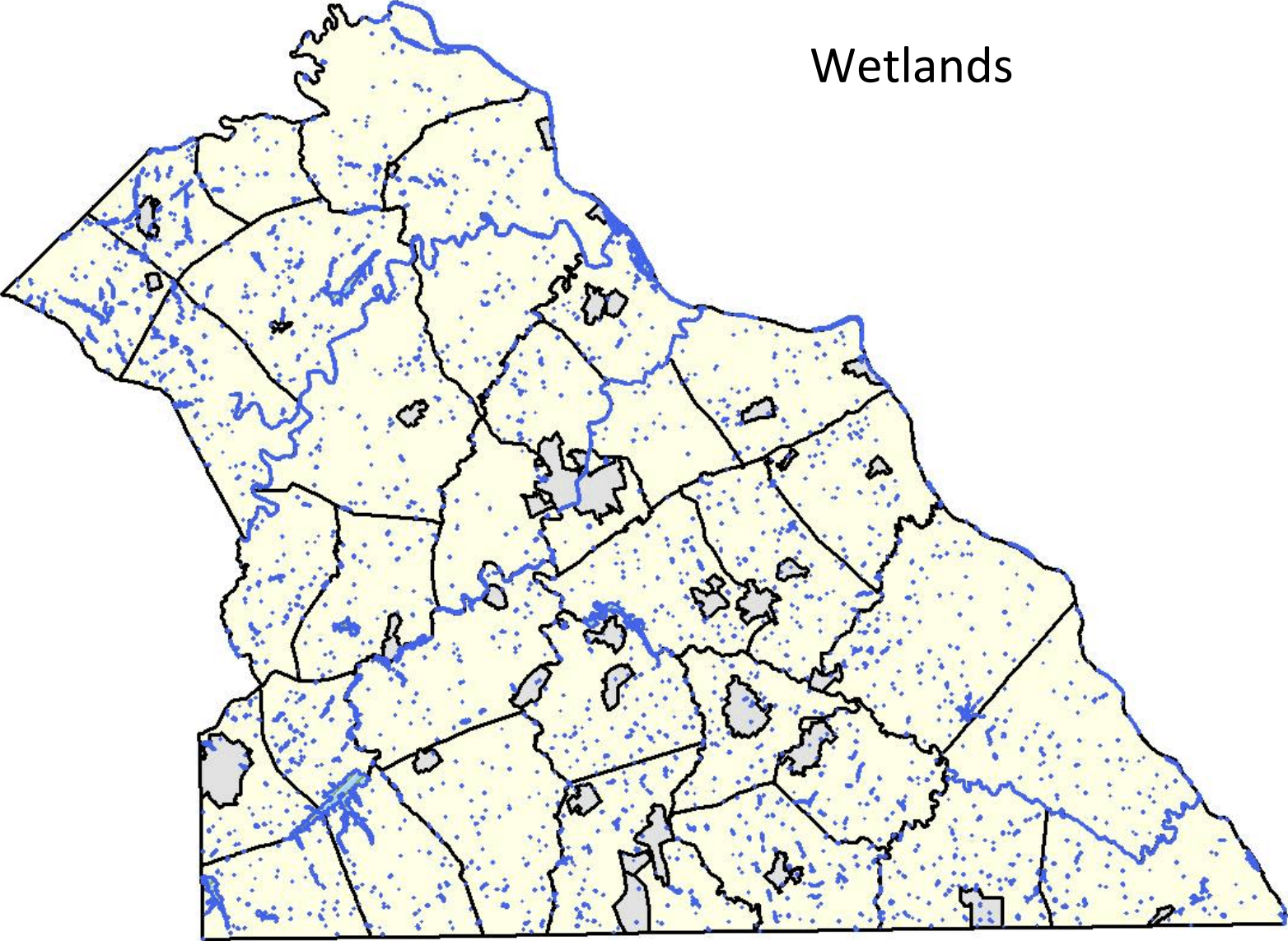
Floodplains



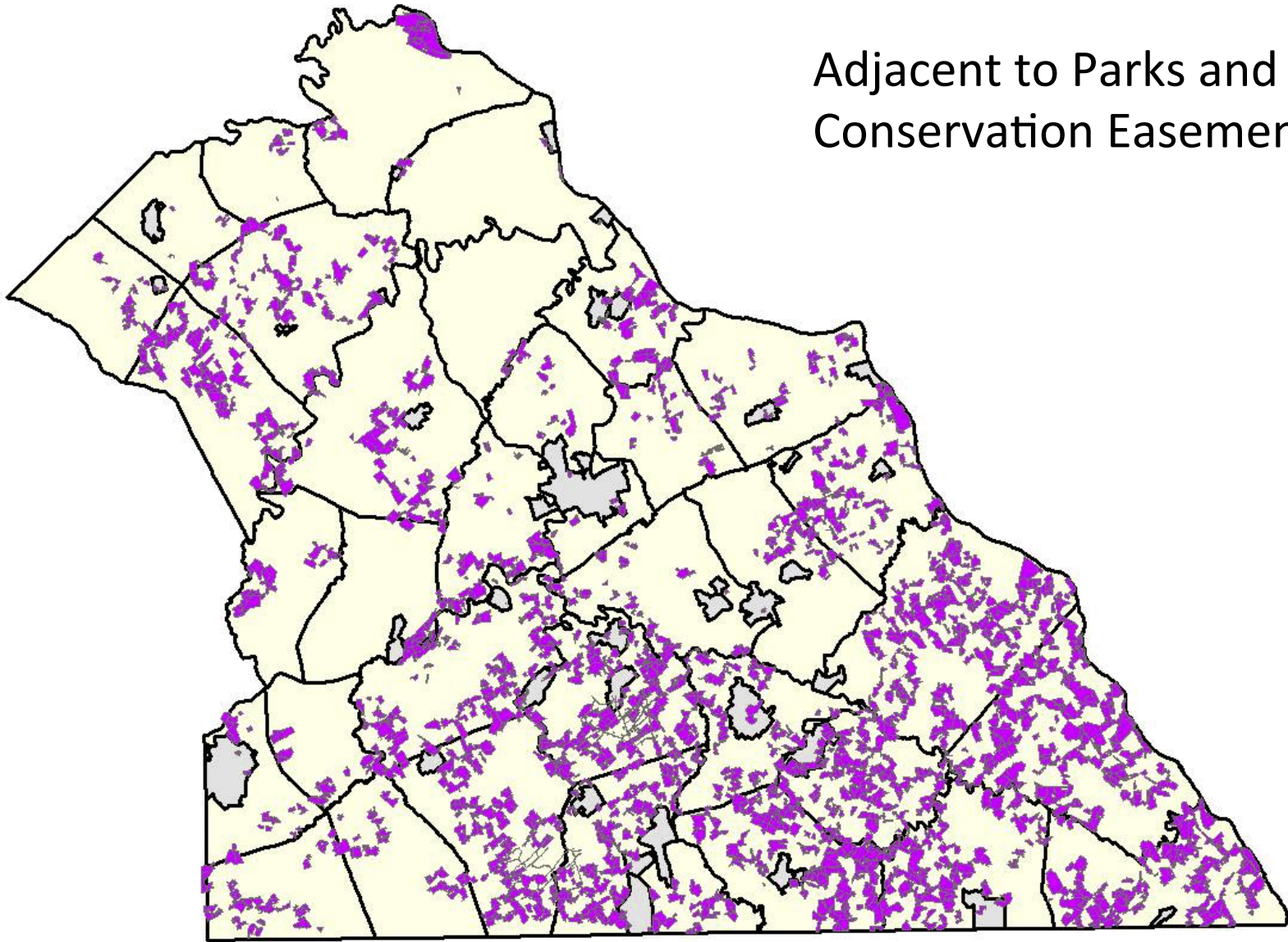
Streams



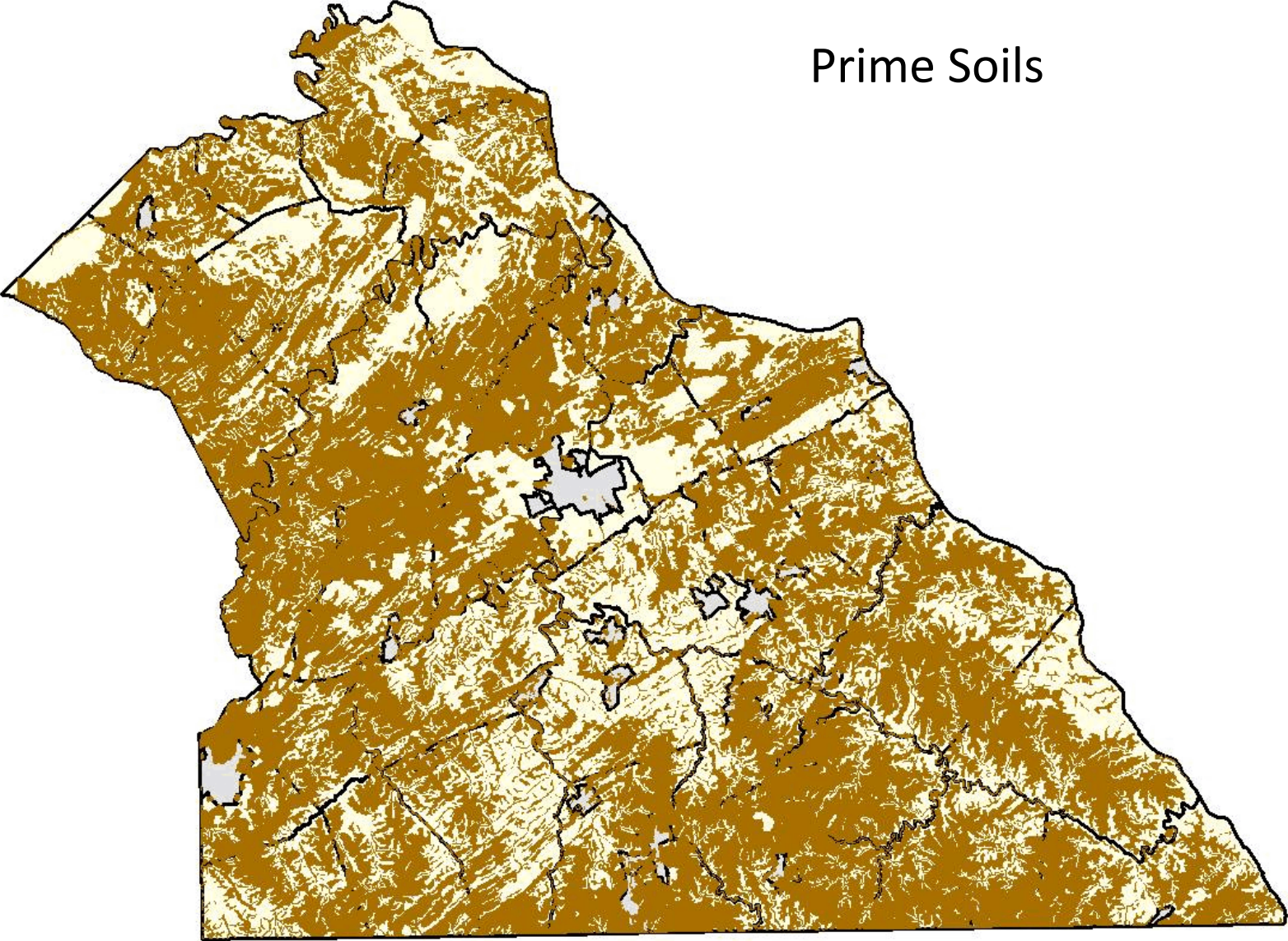
Wetlands



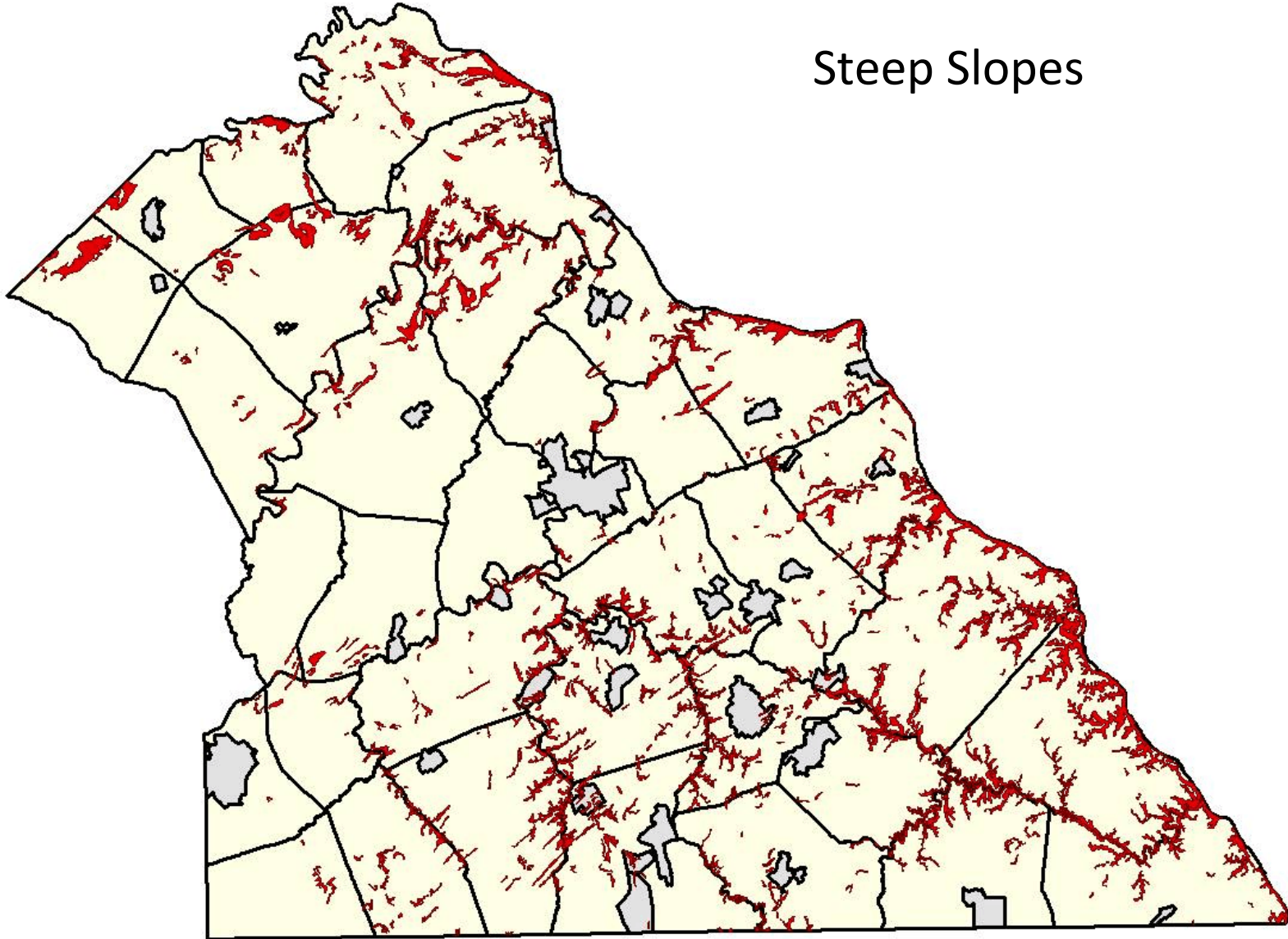
Adjacent to Parks and Conservation Easements



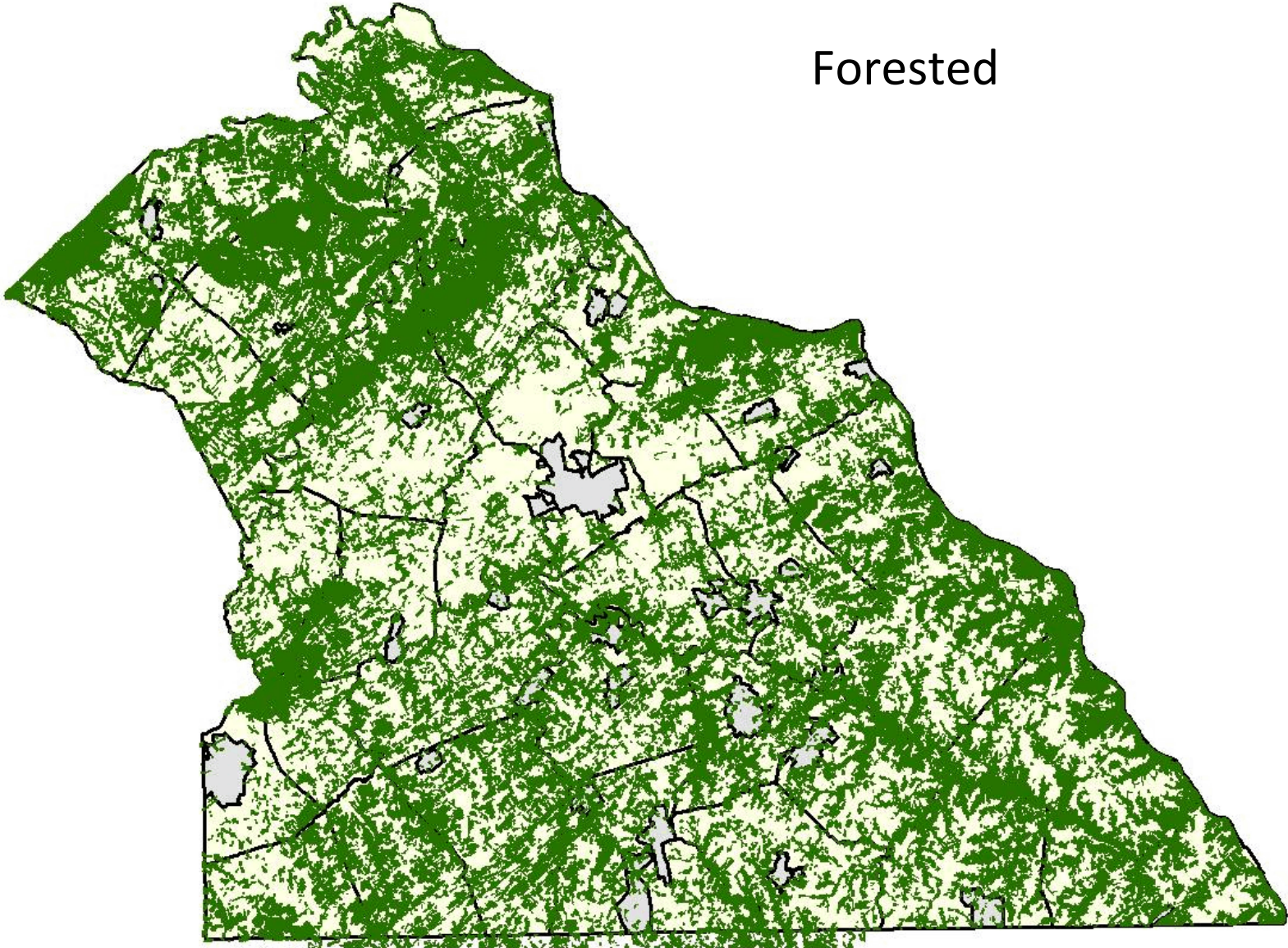
Prime Soils



Steep Slopes



Forested



All Criteria

